



healthyseminars.com

DISCLAIMER

This course and handouts contain general information about medical conditions and treatments. The information is not advice, and should not be treated as such.

Limitation of warranties

The medical information in this course and handouts is provided "as is" without any representations or warranties, express or implied. Healthy Seminars makes no representations or warranties in relation to the medical information on this website.

Without prejudice to the generality of the foregoing paragraph, Healthy Seminars does not warrant that:

- The medical information in this course will be constantly available, or available at all; or
- The medical information in this course is complete, true, accurate, up-to-date, or non-misleading.

Professional assistance

You must not rely on the information in this course as an alternative to medical advice from your doctor or other professional healthcare provider.

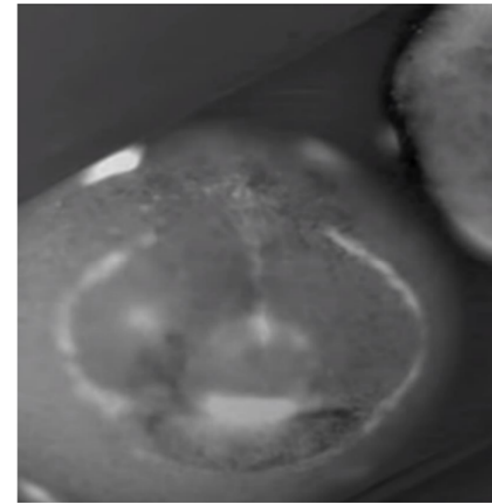
If you have any specific questions about any medical matter you should consult your doctor or other professional healthcare provider.

If you think you may be suffering from any medical condition you should seek immediate medical attention.

You should never delay seeking medical advice, disregard medical advice, or discontinue medical treatment because of information on this website.

BIOELECTRIC FIELD

Tufts biologist Dr. Adams, Ph.D., showed that **bioelectrical signals are necessary for normal face formation** in the Xenopus (frog) embryos.



Challenges the traditional dogma that genes alone are sufficient to build an organ or cause cellular patterning.

Source:

<https://now.tufts.edu/2011/12/08/researchers-discover-changes-bioelectric-signals-trigger-formation-new-organs>

<https://now.tufts.edu/2011/07/18/face-frog-time-lapse-video-reveals-never-seen-bioelectric-pattern>

<https://news.harvard.edu/gazette/story/2019/07/wyss-researchers-has-electrifying-insights-into-how-bodies-form/>



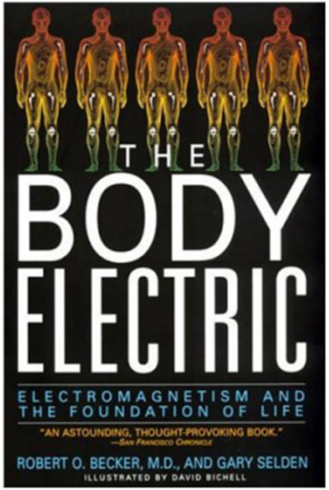
drprana.com | Ayurveda | Eastern Medicine | CranioSacral Healing | Siddha InnerAlchemy

BIOELECTRIC FIELD

“the bioelectric potential is not just a byproduct of living; it is a **medium that cells exploit to communicate** with each other and to form networks that are much more than the sum of their parts.” – Dr. Michael Levin, Ph.D.



A third communication system in the body, that is prenatal and is involved in morphogenesis !?

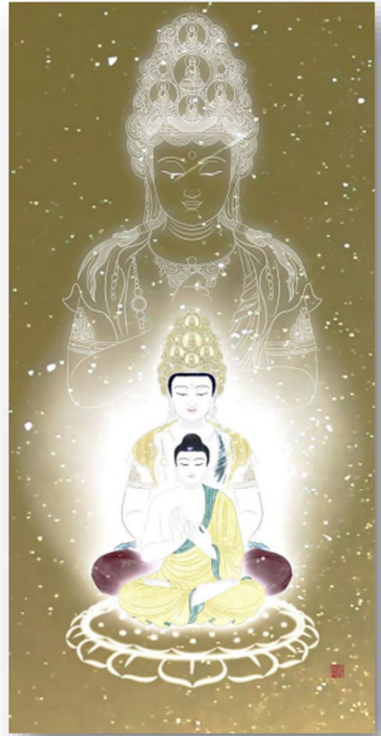
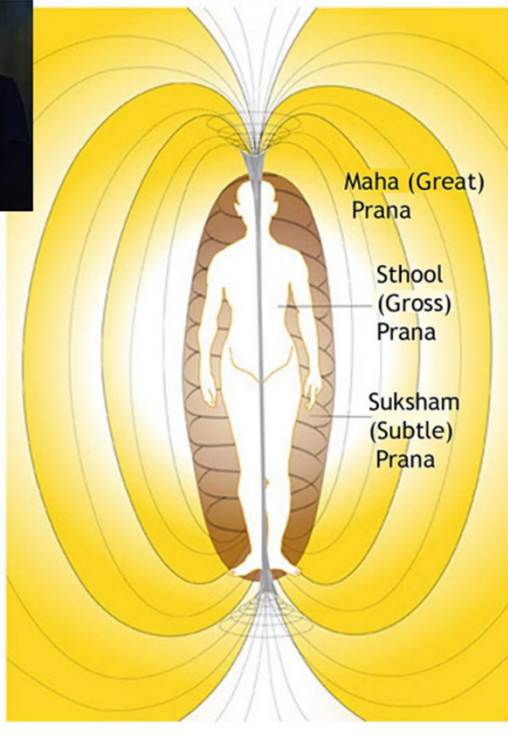
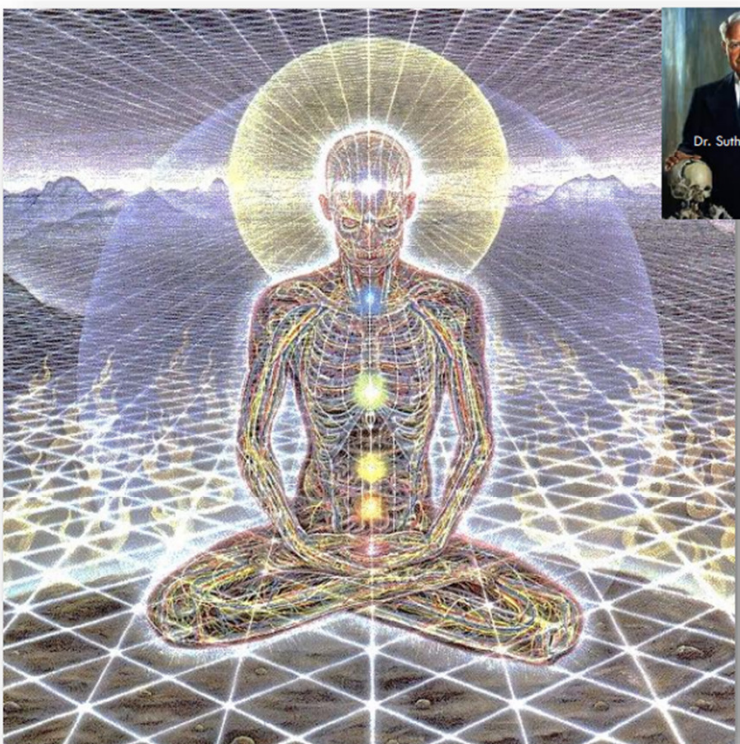


Source:
<https://now.tufts.edu/2011/12/08/researchers-discover-changes-bioelectric-signals-trigger-formation-new-organs>
<https://now.tufts.edu/2011/07/18/face-frog-time-lapse-video-reveals-never-seen-bioelectric-pattern>
<https://news.harvard.edu/gazette/story/2019/07/wyss-researchers-has-electrifying-insights-into-how-bodies-form/>



drprana.com | Ayurveda | Eastern Medicine | CranioSacral Healing | Siddha InnerAlchemy

THREE PRANIC FIELDS OR THREE BODIES



drprana.com | Ayurveda | Eastern Medicine | CranioSacral Healing | Siddha InnerAlchemy

CLINICAL IMPLICATIONS: BIOELECTRIC FIELD

Bioelectric and pulsed magnetic field: Energy

- ❖ 0.01-0.1 Gauss, 10 Hz: Neuronal Regeneration
- ❖ 6-8 Hz, 10-15 mins, 2x/week, 4 Weeks: Hypertension Reduction
- ❖ 10 Hz, 40-50 Gauss: Migraine Relief
- ❖ 4-12 Hz: Pain Reduction
- ❖ 40 Hz – brain and spinal health



Cultivate the Subtle: Inner Alchemy

- ❖ Extraordinary Channels
- ❖ Daoist Stillness practices
- ❖ Deeper aspects of Yoga
- ❖ Harmony with Nature
- ❖ Whatever helps to “quieten qi and reduce the activity of mind.”



drprana.com | Ayurveda | Eastern Medicine | CranioSacral Healing | Siddha InnerAlchemy

PRANIC FREQUENCIES APP (PEMF & BINAURAL)

FREE APP



Professional version (\$9)

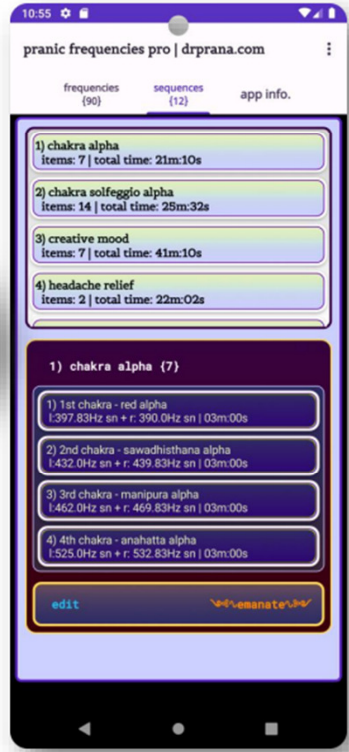
Pemf peripheral



FREE APP



Professional version (\$9)



drprana.com | Ayurveda | Eastern Medicine | CranioSacral Healing | Siddha InnerAlchemy



Healthy Horizons Symposium